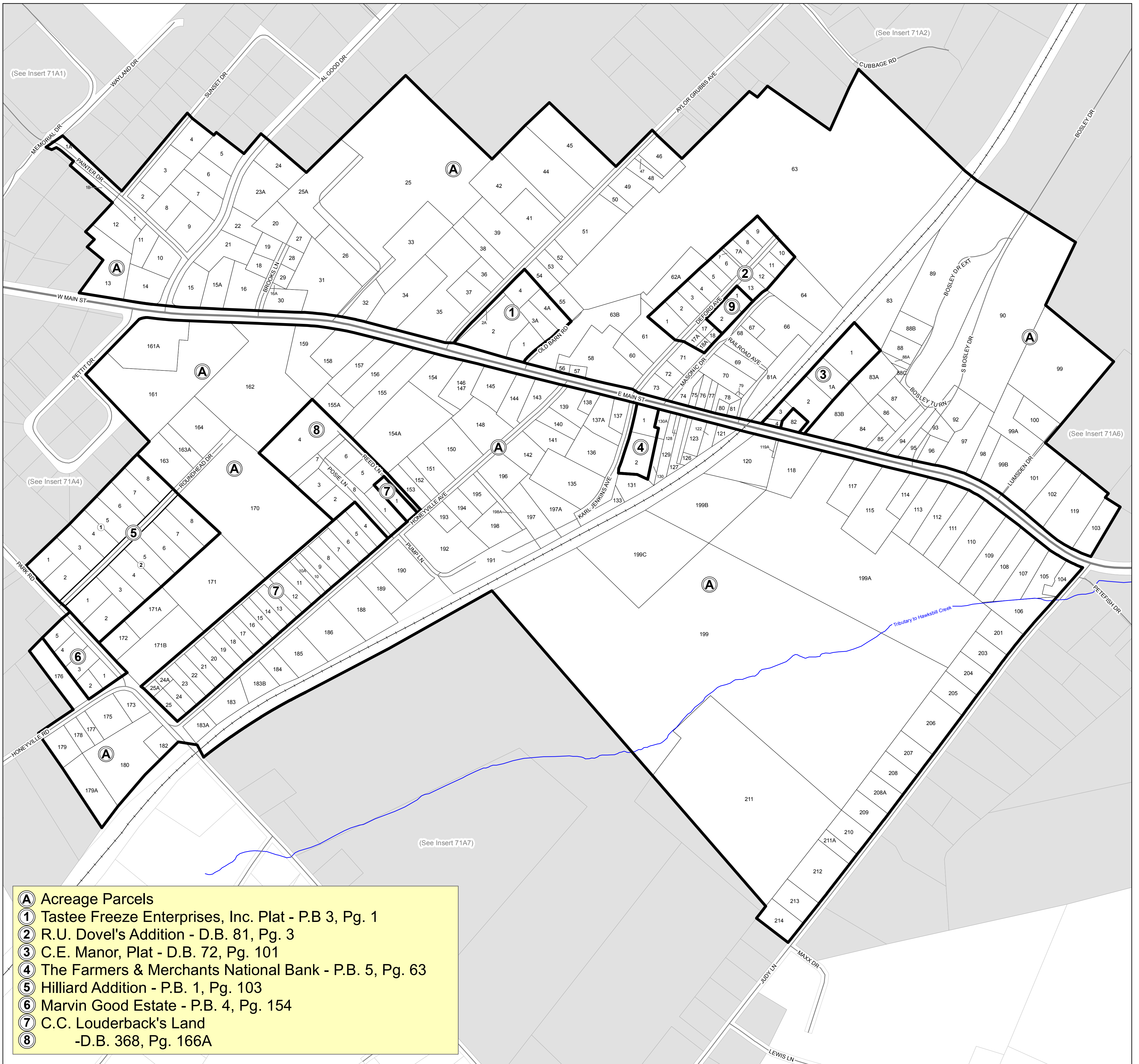
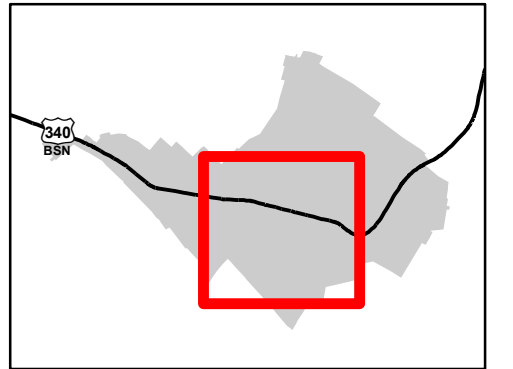


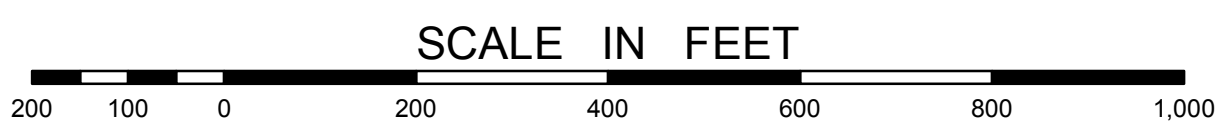


Insert Parcels

Page County, Virginia



- A** Acreage Parcels
- 1** Tastee Freeze Enterprises, Inc. Plat - P.B 3, Pg. 1
- 2** R.U. Dovel's Addition - D.B. 81, Pg. 3
- 3** C.E. Manor, Plat - D.B. 72, Pg. 101
- 4** The Farmers & Merchants National Bank - P.B. 5, Pg. 63
- 5** Hilliard Addition - P.B. 1, Pg. 103
- 6** Marvin Good Estate - P.B. 4, Pg. 154
- 7** C.C. Louderback's Land
- 8** -D.B. 368, Pg. 166A



MARKSVILLE
STANLEY

May 2019
Commissioner of Revenue
Reference Use Only

Any determination of topography or contours, or any depiction of physical improvements, property lines or boundaries is for general information only and shall not be used for the design, modification, or construction of improvements to real property or for flood plain determination.

Insert 71A5