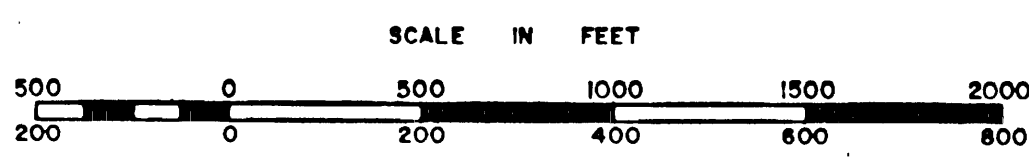
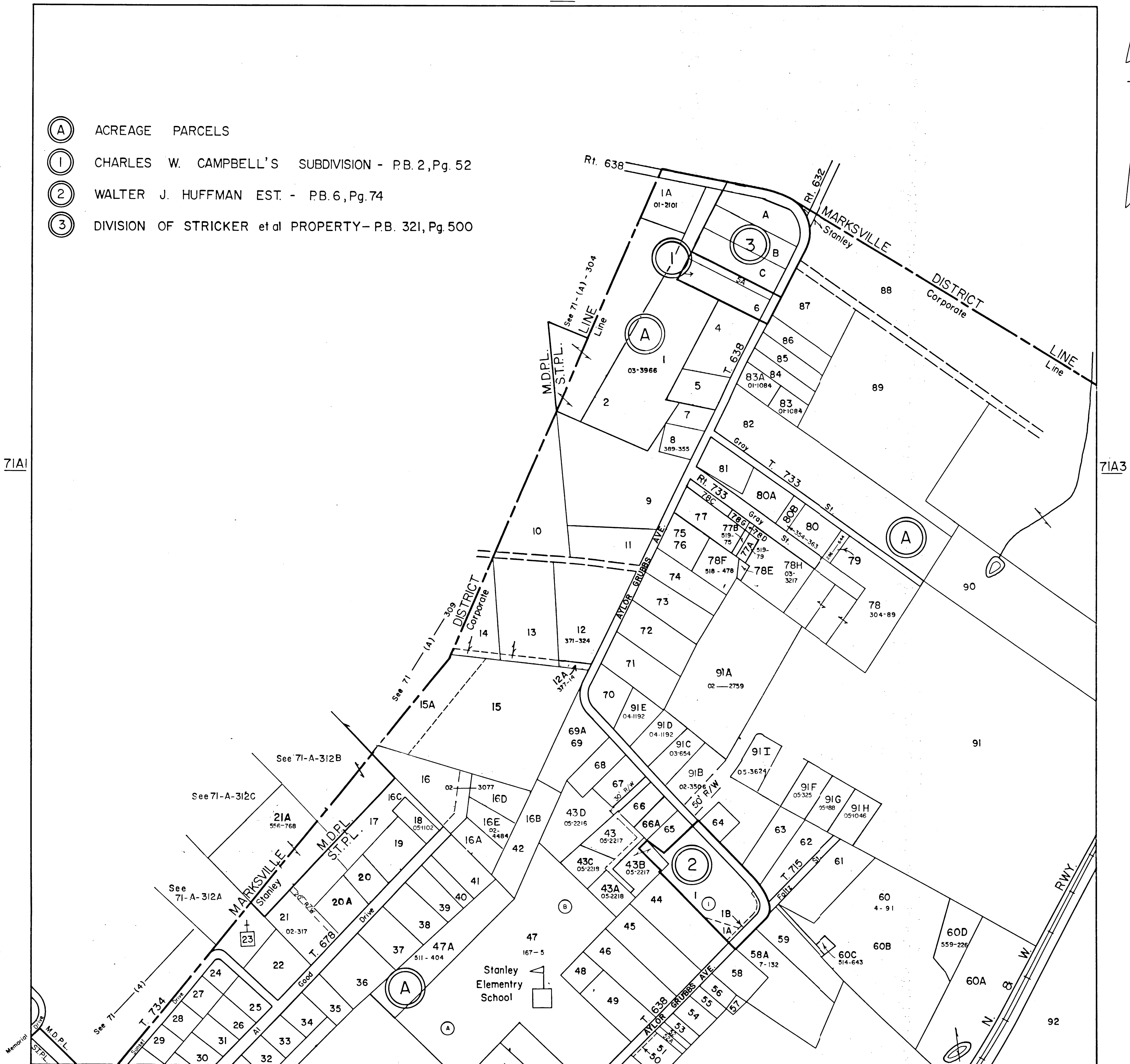


PAGE COUNTY

NONE

- (A) ACREAGE PARCELS
- (1) CHARLES W. CAMPBELL'S SUBDIVISION - P.B. 2, Pg. 52
- (2) WALTER J. HUFFMAN EST. - P.B. 6, Pg. 74
- (3) DIVISION OF STRICKER et al PROPERTY - P.B. 321, Pg. 500



MARKSVILLE
STANLEY

DISTRICT
TOWN

SECTION
INSERT 71A2

REVISED: